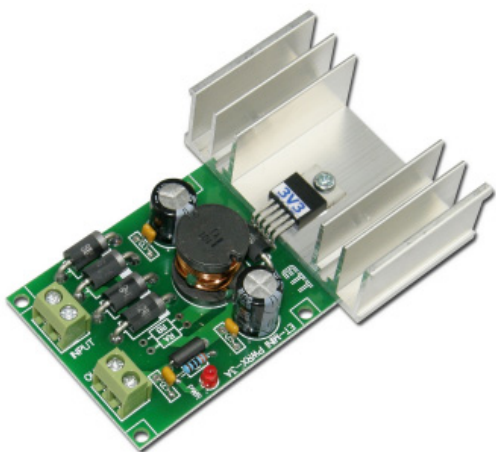
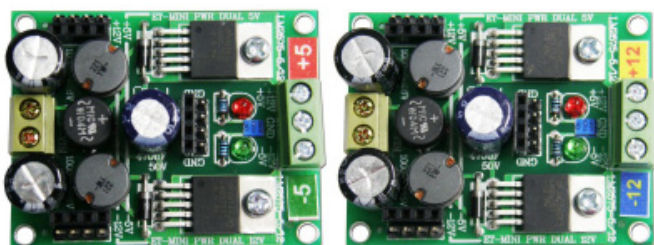


ET-MINI PWR5-3A (P-ET-A-00455)**ET-MINI PWR12-3A** (P-ET-A-00456)**ET-MINI PWR3.3-3A** (P-ET-A-00457)

It is POWER SUPPLY in the format of Circuit STEP-DOWN Voltage Regulator OUTPUT 3A that uses IC No.LM2576. There are 3 sizes of OUTPUT Voltage as follows;

- ET-MINI PWR5-3A gives OUTPUT 5VDC/3AMP: INPUT VOLT 9 - 35 VDC.
- ET-MINI PWR12-3A gives OUTPUT 12VDC/3AMP: INPUT VOLT 15 - 35 VDC.
- ET-MINI PWR3.3-3A gives OUTPUT 3.3VDC/3AMP: INPUT VOLT 7 - 35 VDC.

It uses Connector 2PIN TERMINAL INPUT (5mm.) and Connector 2PIN Terminal OUTPUT (5mm.). The board size with HEAT SINK (ET-MINI PWR 5-3A) gives OUTPUT 5VDC/3AMP: INPUT VOLT 9-35 VDC (WxLxD) 6.0 x 9.0 x 3.5 cm.

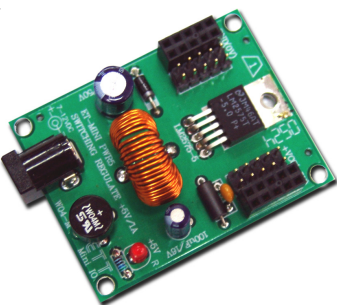
ET-MINI PWR DUAL 5 (P-ET-A-00307)**ET-MINI PWR DUAL 12** (P-ET-A-00308)

ET-MINI PWR DUAL 5

ET-MINI PWR DUAL 12

It is POWER SUPPLY that has positive and negative power supply from OUTPUT and only positive power supply from INPUT. In this case, it uses 2 Circuit STEP-DOWN VOLTAGE REGULATORS; No.LM2575T-5 of DUAL 5 and No.LM2575T-12 of DUAL 12.

- INPUT DC POWER 7 - 24VDC
- OUTPUT +5V, -5V Common GND, 1A CURRENT in ET-MINI PWR DUAL 5
- OUTPUT +12V, -12V Common GND, 1A CURRENT in ET-MINI PWR DUAL 12
- Connector INPUT DC 2PIN PCB TERMINAL SCREW TYPE
- Connector OUTPUT DC 3PIN PCB TERMINAL SCREW TYPE
- PCB size 4.5 x 5.6 cm.

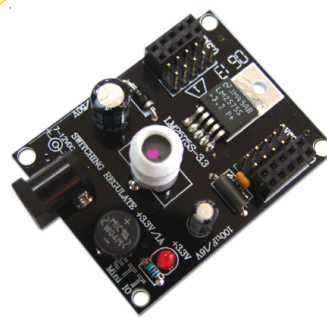
ET-MINI PWR 5 (P-ET-A-00233)

It is Power Supply in Step-Down Voltage Regulator CIRCUIT and uses IC NO.LM2575-5. Be able to receive INPUT DC Power 9-35V to OUTPUT 5VDC. Port INPUT is DC JACK size 2.5mm. and PORT OUTPUT is HEADER MALE and HEADER FEMALE.

ET-MINI PWR ADJ (P-ET-A-00499)

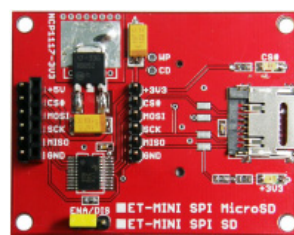
ET-MINI PWR-ADJ ... is Board DC POWER SUPPLY in the format of SWITCHING STEP DOWN REGULATOR. It can adjust OUTPUT DC by self or user can set JUMPER either to be DC OUTPUT 5V or 3.3V as preferred.

- Use IC STep Down No.LM2596SX-ADJ
- Use Current OUTPUT 2A at the maximum, receive Current INPUT 4.5 32VDC
- Set JUMPER to choose Current OUTPUT either to be 5V or 3.3V
- Can adjust Current OUTPUT as 1.23V-27VDC by VR TRIMPORT (Current INPUT should be higher than OUTPUT 2V at least).
- Connector on the side of INPUT is 2 PIN TERMINAL and DC JACK 2.5 mm.
- PCB size is 4.3 x 5.6 cm.

ET-MINI PWR 3.3 (P-ET-A-00289)

It is POWER SUPPLY as Step-Down Voltage Regulator type that uses IC No.LM2575S-3.3.

It can receive INPUT DC POWER 5-35V; can give OUTPUT 3.3VDC. CONNECTOR INPUT is DC JACK TYPE 2.5mm; CONNECTOR OUTPUT is MALE HEADER and FEMALE HEADER.

ET-MINI SPI MICRO SD (P-ET-A-00431)**ET-MINI SPI SD** (P-ET-A-000432)

ET-MINI SPI MICRO SD



ET-MINI SPI SD ด้านบน



ET-MINI SPI SD ด้านล่าง

ET-MINI SPI SD and MICRO SD is a Board with SOCKET SD CARD or MICRO SD CARD, including Circuit CONVERTER to convert Logic level (74LCX245) and Circuit REGULATE 3.3V/1A. So, it can interface this board with MCU 5V directly. It uses SPI Interface for interfacing with SD CARD.

ET-MINI SD/MMC (P-ET-A-00298)

Board with both SD and MMC SOCKET MEMORY CARD and Signal Pins are arranged to interface with Board Microcontroller easier. Additionally, it can be used with MINI MP3.

