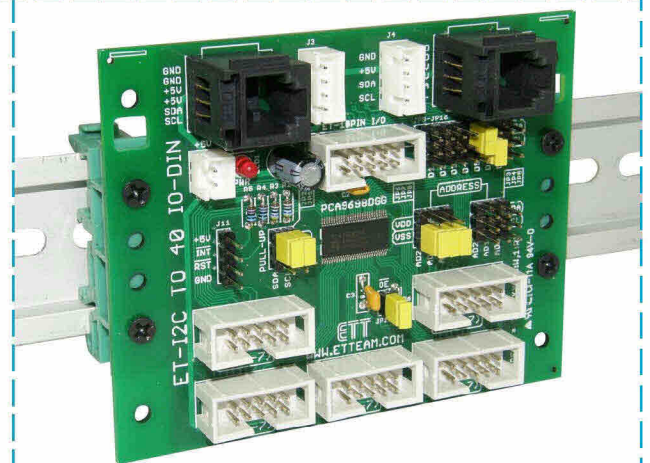
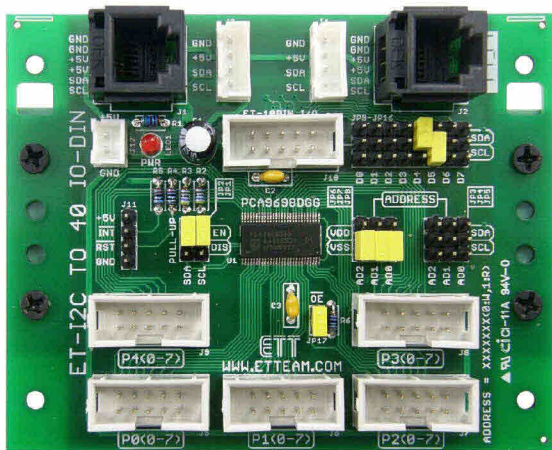
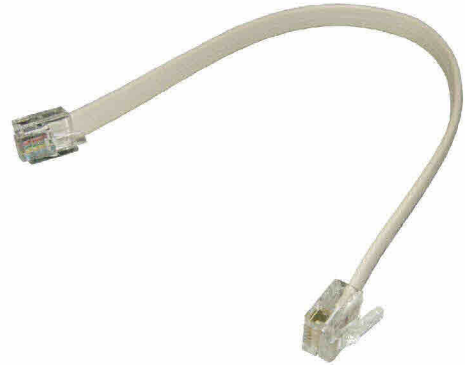
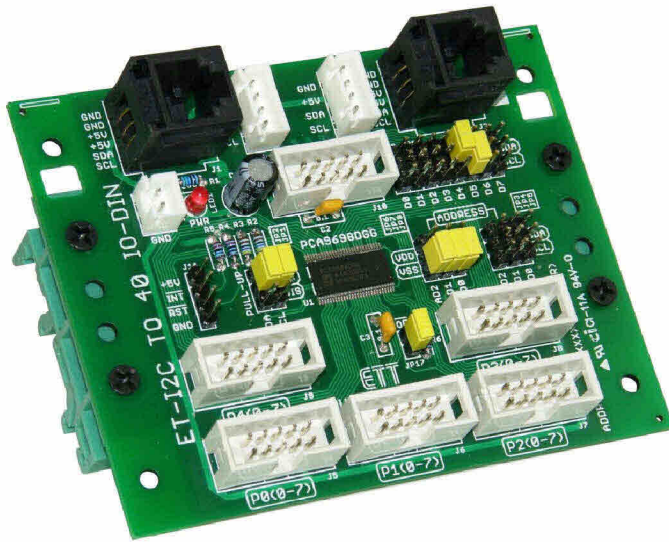


ET-I2C TO 40 IO-DIN (P-ET-A-00578)

ET-I2C TO 40 IO-DIN is INPUT, OUTPUT Expansion Board for MCU via BUS I2C; it expands amount of I/O to 40 BIT like ET-ESP8266-RS485, ET-MEGA32U4-RS485 or BOARD MCU of ETT via Connector I/O 10 PIN.



● It illustrates how to connect ET-I2C TO 40 IO-DIN to RIAL DIN 35 mm.

SPECIFICATIONS

- Use IC No.PCA9698DGG 56 PIN TSSOP TYPE from NXP
- POWER SUPPLY 2.3V-5.5V
- PIN I/O is used either to be INPUT or OUTPUT 40 BIT (5 PORT)
- I/O PORT OUTPUT CURRENT SOURCE/SINK 10 mA and 25 mA
- I2C Interface at the maximum Frequency 1 MHZ
- Choose 64-ADDRESS by setting JUMPER
- CONNECTOR I/O is used as 5 of ETT 10 PIN IDC
- Connector I2C for Board is WAFER 4 PIN (2.50 mm.) and 2 of FEMALE RJ11 6 PIN; it can be connected to board or it is connected together from board. Moreover, it provides Connector ETT 10 PIN IDC that is connected from ETT Boards for connecting and receiving Signal I2C to board, including JUMPER for choosing BIT for SCL, SDA
- Rail DIN 35 mm.
- PCB size: 9.6 x 7.6 cm.
- Package of **ET-I2C TO 40 IO-DIN** includes...

1. Board
2. CD-ROM Manual and Example Program
3. CABLE RJ-I2C-RJ

