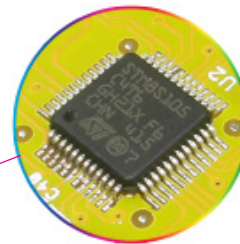
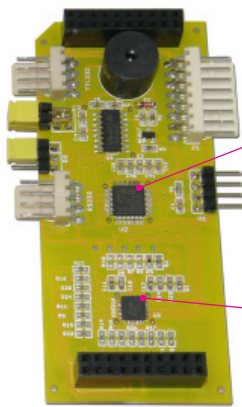
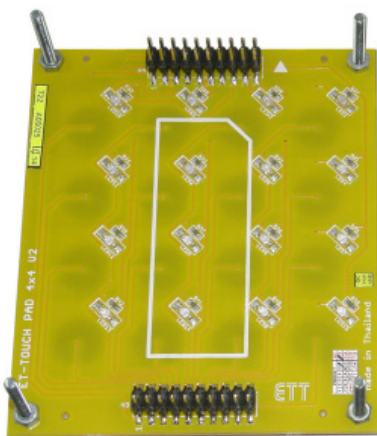
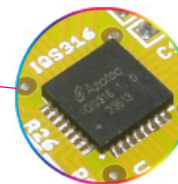


ET-TOUCH PAD 4 x 4 V2 (P-ET-A-00516)



MCU # **STM8S105C4** is Controller and communicates between **IQS316** and external devices.



IC **KEY TOUCH**, especially No. **IQS316** from **AZOTEQ**, reduces signal noises well.

ET-TOUCH PAD 4x4 V2 is the latest Board TOUCH KEY that is developed and improved from the initial model "ET-TOUCH PAD 4x4"; it reduces signal noises that occurred because of the operation and it increases more connection and use conveniently.

- Be 16-KEY CAPACITIVE SENSING TOUCH PAD (4x4)
- Use IC No. IQS316 from AZOTEQ that is specially designed as KEY TOUCH, it reduces signal noises well
- Use MCU No. STM8S105C4 to be Controller and communicate between IQS316 and external devices
- Use 3.3VDC - 5VDC Power Supply for Board
- Show the status of pressing KEY by sound (BUZZER) and 16-LED on position of individual KEY SW.
- Set ON/OFF BUZZER and all 16-LED of individual KEY by JUMPER
- Have 2 types of OUTPUT for sending the pressed KEY CODE as follows;
 - BINARY CODE (BCD 8421): It is sent through CONNECTOR 8 PIN; Signal TTL is connected with 3.3V – 5.0V.
 - ASCII CODE: It is sent through CONNECTOR RS232. There are 2 types of RS232 for this model V2; RS232 TTL 4 PIN and RS232 with LINE DRIVER 4 PIN. It sets BAUSD RATE for sending data as 9600 bit/s.
- Have 1 special KEY; it can be used either to be normal KEY or KEY SHIF
- Key Touch Pad is made from translucent plastic with 2mm. thick
- Board size: 76.2 x 88.9 mm. (the same size as the initial model "ET-TOUCH PAD 4x4")
- **ET-TOUCH PAD 4x4 V2** includes...

1. Board ET-TOUCH PAD 4x4 V2
2. CD-ROM Manual and Example Programs

