

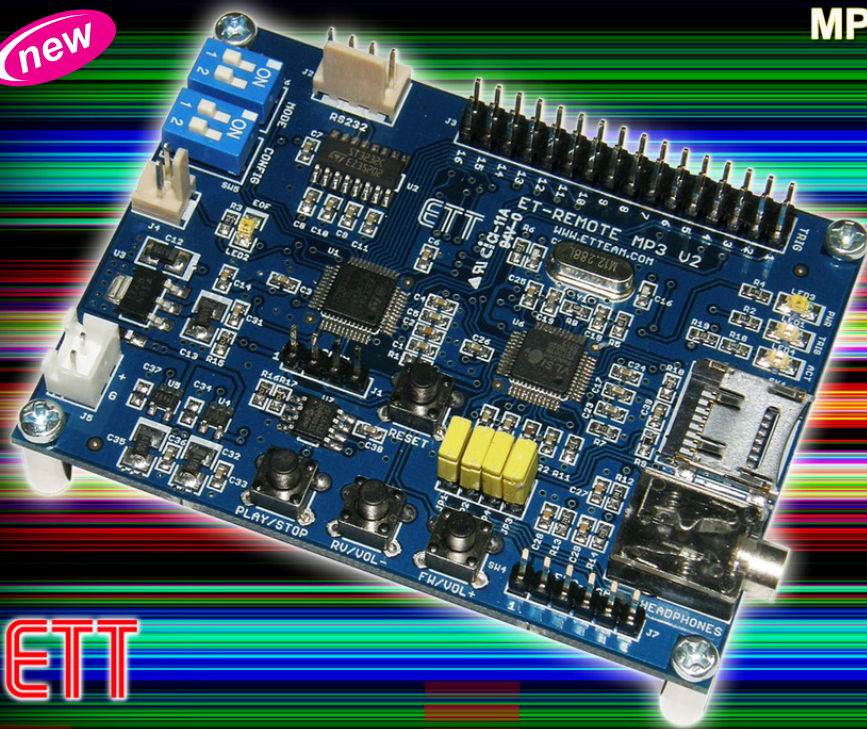
ET-REMOTE MP3 V2

(P-ET-A-00471)



new

MP3 DECODER # VS1003B



4 OPERATION MODES

- : Command Mode
- : List Song Mode
- : MP3 SW. Mode
- : Trig Mode

ETT

The latest Board MP3 Decoder that is cheap at the price. It receives Commands through RS232 PORT to control to play files from MEMORY CARD 'SD-MICRO' in the format of MP3 or WAV. It uses the device No.VS1003B from VLSI to be MP3 Decoder; this IC MP3 Decoder has high-quality sound, so it is suitable for applying for advertisement, exhibition, or museum.

Specification of ET-REMOTE MP3 V2

- Use CPU No. STM8S105 and VS1003B Decoder
- Has SOCKET on board for inserting SD CARD # MICRO-SD
- There are 4 operation modes;
 - COMMAND MODE: It controls to play files by Command from RS232 PORT.
 - LIST SONG MODE: It calls to see list of song file and order of file in MICRO-SD.
 - MP3 SW MODE: It controls the operation by SW. on board.
 - TRIG MODE: It uses external OUTPUT to TRIG and choose files. There are 16 INPUTs, or it is interfaced to be 16 SW. for TRIG to choose 16 files.
- Every time it ends any file, it gives OUTPUT LOGIC 0 through CONNECTOR and it is sent in the format of COMMAND EOF through RS232 for COMMAND MODE.
- Only supports file MP3 or WAV; it cannot RECORD.
- Support MICRO-SD from 2GB to 16GB in the format of FAT 16 and 32.
- Set 4 BAUDRATE; 4800, 9600, 57600, and 115200
- Use DC 5V with Connector TYPE B (it is compatible with POWER SUPPLY from ETT version 'ET-SWITCHING ADAPTER 5V 1.2A TYPE B')
- Use sound OUTPUT in the format of HEAD-PHONE JACK STEREO
- PCB size: 8.00 x 6.10 cm.
- ET-REMOTE MP3 V2 Set consists of...

1. Board ET-REMOTE MP3 V2
2. CD-ROM User's Manual
3. Cable ET-RS232 DB9 PIN
4. Cable 4 PIN RS232



Electronics Technology Team

