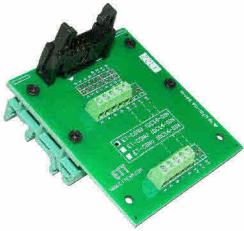


ET-CONV IDCXX-DIN is Board Converter that converts various sizes of HEADER CONNECTER MALE 2.54mm. to the size as user required. It changes Connector from IDC of various sizes of CABLE PAIR to TERMINAL HEADER that is easier to connect CABLES by screwing. Moreover, it provides fastener on board to attach with RAIL DIN 35mm; it is more convenient to be used with PLC Systems that attached LED Box with RAIL DIN 35 mm.

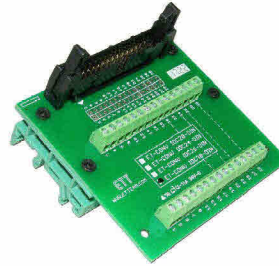
ET-CONV IDC10-DIN (P-ET-A-00559)



● HEADER CONNECTOR 2.54mm 10 PIN is converted to CONNECTOR TERMINAL SCREW PITCH 3.50mm 10 PIN with 2 of RAIL DIN 35 mm. and PCB SIZE is 6.35 x 7.40 cm.



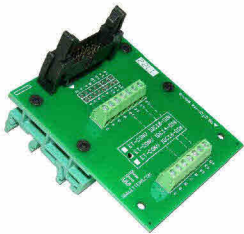
ET-CONV IDC30-DIN (P-ET-A-00566)



● HEADER CONNECTOR 2.54mm 30 PIN is converted to CONNECTOR TERMINAL SCREW PITCH 3.50mm 30 PIN with 2 of RAIL DIN 35 mm. and PCB SIZE is 7.89 x 7.40 cm.



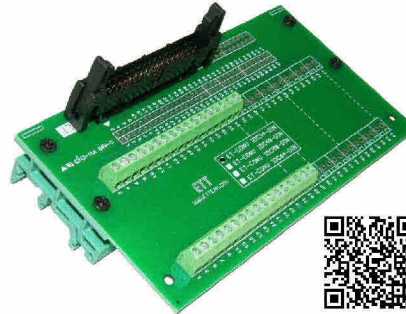
ET-CONV IDC14-DIN (P-ET-A-00560)



● HEADER CONNECTOR 2.54mm 14 PIN is converted to CONNECTOR TERMINAL SCREW PITCH 3.50mm 14 PIN with 2 of RAIL DIN 35 mm. and PCB SIZE is 6.35 x 7.40 cm.



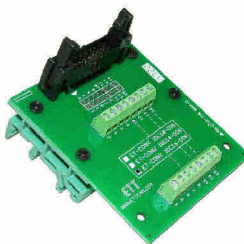
ET-CONV IDC34-DIN (P-ET-A-00567)



● HEADER CONNECTOR 2.54mm 34 PIN is converted to CONNECTOR TERMINAL SCREW PITCH 3.50mm 34 PIN with 2 of RAIL DIN 35 mm. and PCB SIZE is 13.40 x 7.40 cm..



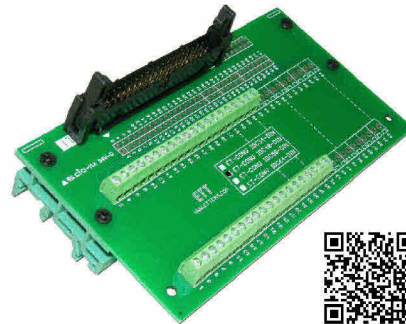
ET-CONV IDC16-DIN (P-ET-A-00561)



● HEADER CONNECTOR 2.54mm 16 PIN is converted to CONNECTOR TERMINAL SCREW PITCH 3.50mm 16 PIN with 2 of RAIL DIN 35 mm. and PCB SIZE is 6.35 x 7.40 cm.



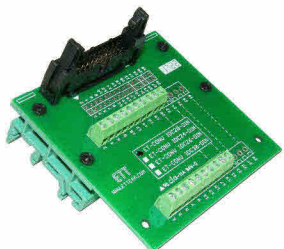
ET-CONV IDC40-DIN (P-ET-A-00568)



● HEADER CONNECTOR 2.54mm 40 PIN is converted to CONNECTOR TERMINAL SCREW PITCH 3.50mm 40 PIN with 2 of RAIL DIN 35 mm. and PCB SIZE is 13.40 x 7.40 cm.



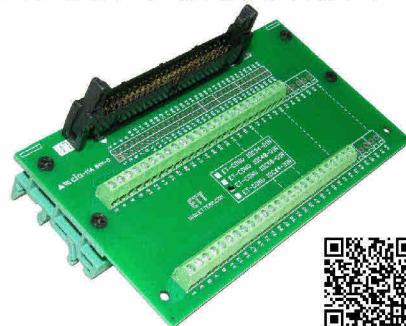
ET-CONV IDC20-DIN (P-ET-A-00562)



● HEADER CONNECTOR 2.54mm 20 PIN is converted to CONNECTOR TERMINAL SCREW PITCH 3.50mm 20 PIN with 2 of RAIL DIN 35 mm. and PCB SIZE is 7.89 x 7.40 cm.



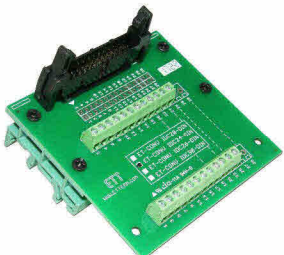
ET-CONV IDC50-DIN (P-ET-A-00569)



● HEADER CONNECTOR 2.54mm 50 PIN is converted to CONNECTOR TERMINAL SCREW PITCH 3.50mm 50 PIN with 2 of RAIL DIN 35 mm. and PCB SIZE is 13.40 x 7.40 cm.



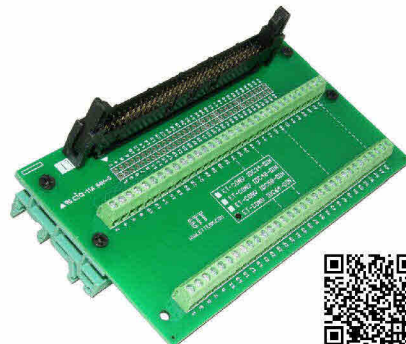
ET-CONV IDC24-DIN (P-ET-A-00563)



● HEADER CONNECTOR 2.54mm 24 PIN is converted to CONNECTOR TERMINAL SCREW PITCH 3.50mm 24 PIN with 2 of RAIL DIN 35 mm. and PCB SIZE is 7.89 x 7.40 cm.



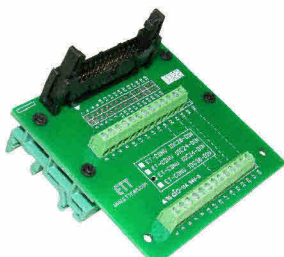
ET-CONV IDC64-DIN (P-ET-A-00570)



● HEADER CONNECTOR 2.54mm 64 PIN is converted to CONNECTOR TERMINAL SCREW PITCH 3.50mm 64 PIN with 2 of RAIL DIN 35 mm. and PCB SIZE is 13.40 x 7.40 cm.



ET-CONV IDC26-DIN (P-ET-A-00565)



● HEADER CONNECTOR 2.54mm 26 PIN is converted to CONNECTOR TERMINAL SCREW PITCH 3.50mm 26 PIN with 2 of RAIL DIN 35 mm. and PCB SIZE is 7.89 x 7.40 cm.

